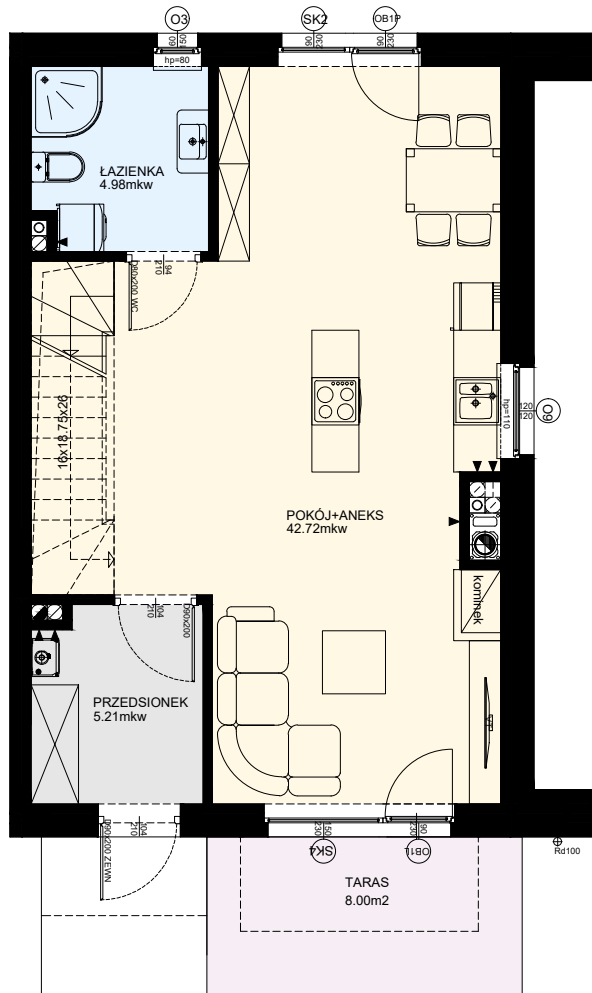
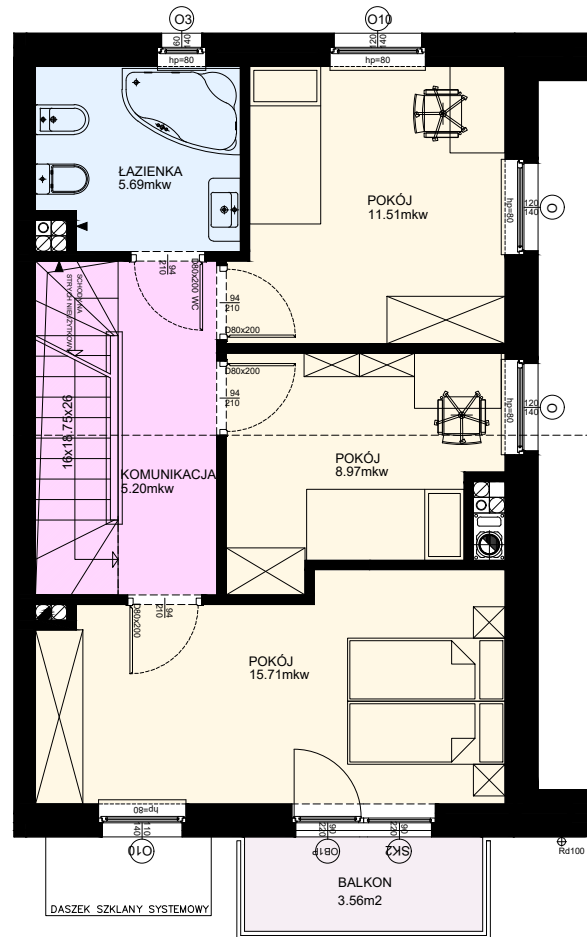


PARTER



PODDASZE



POWIERZCHNIA
99.99m²

| | | | |
|-------------|---------------------|-------------|---------------------|
| PARTER | 52.91m ² | PODDASZE | 47.08m ² |
| POKÓJ+ANEKS | 42.72m ² | POKÓJ | 15.71m ² |
| ŁAZIENKA | 4.98m ² | KOMUNIKACJA | 5.20m ² |
| PRZEDSIONEK | 5.21m ² | ŁAZIENKA | 5.69m ² |
| TARAS | 8.00m ² | POKÓJ | 8.97m ² |
| | | POKÓJ | 11.51m ² |
| | | BALKON | 3.62m ² |

