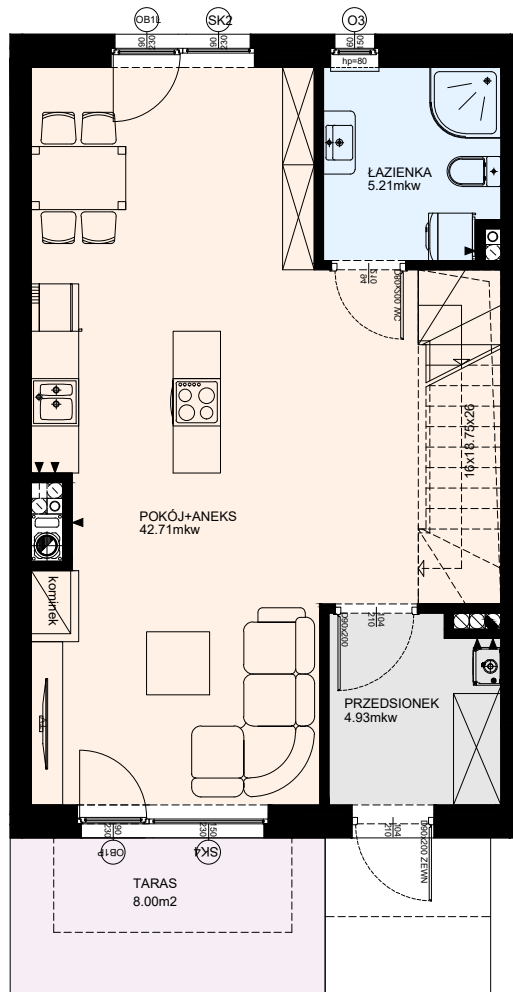
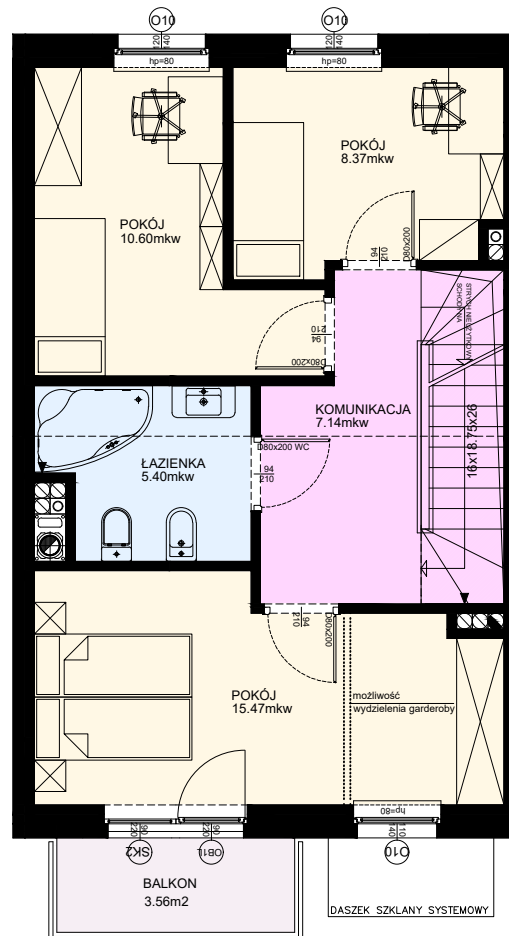


PARTER

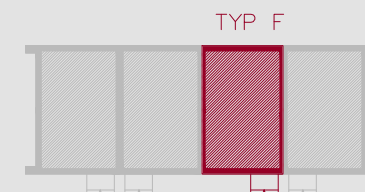
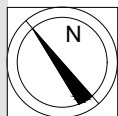


PODDASZE

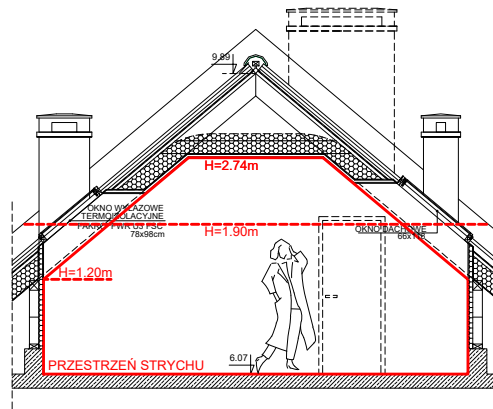
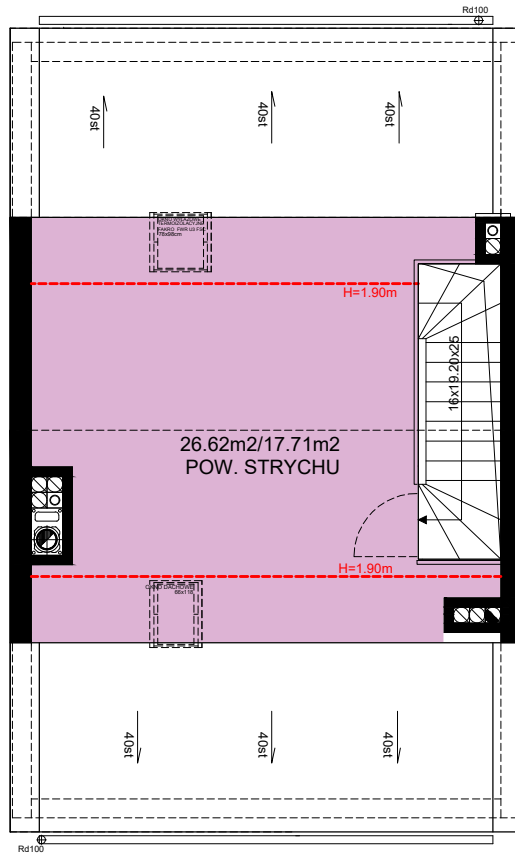


POWIERZCHNIA
99.83m²

PARTER	52.85m ²	PODDASZE	46.98m ²
POKÓJ+ANEKS	42.71m ²	POKÓJ	15.47m ²
ŁAZIENKA	5.21m ²	KOMUNIKACJA	7.14m ²
PRZEDSIONEK	4.93m ²	ŁAZIENKA	5.40m ²
TARAS	8.00m ²	POKÓJ	8.37m ²
		POKÓJ	10.60m ²
		BALKON	3.56m ²



STRYCH



POWIERZCHNIA
99.83m²

PARTER	52.85m ²	PODDASZE	46.98m ²
POKÓJ+ANEKS	42.71m ²	POKÓJ	15.47m ²
ŁAZIENKA	5.21m ²	KOMUNIKACJA	7.14m ²
PRZEDSIONEK	4.93m ²	ŁAZIENKA	5.40m ²
TARAS	8.00m ²	POKÓJ	8.37m ²
		POKÓJ	10.60m ²
		BALKON	3.56m ²

